

EW-T114 Board specification

D Features

- Compatible with VGA~SXGA (1280x1024) resolution TFT LCD panel.
- Supply single pixel (24bits) or dual pixel (48bits) digital RGB output.
- Support Vertical refresh rate up to 75Hz for VGA~SXGA of VESA standard specification.
- Support LVDS interface output .
- Support Audio function (3W x 2) with stereophonic output connector .
- Provide VGA , Video , S-Video input and Video output .

Board Overall View

- Main Chips: RTD2670N(3D).
- Supply Panel Power: 5V or 12V.
- Graphic Input Port: VGA, CVBS(BNC) , S-Video.
- Audio Input Port: 3.5φ x 1(PC), RCA x 2(Video).
- Video Output Port: BNC x 1 .

Support Timing Table

| Mode | Resolution | H Freq.(kHz) | V Freq.(Hz) |
|------|--------------|--------------|-------------|
| 1 | 640*350@70 | 31.469 | 70.087 |
| 2 | 640*400@70 | 31.469 | 70.087 |
| 3 | 640*480@60 | 31.469 | 59.940 |
| 4 | 640*480@72 | 37.861 | 72.809 |
| 5 | 640*480@75 | 37.500 | 75.000 |
| 6 | 720*400@70 | 31.469 | 70.087 |
| 7 | 800*600@56 | 35.156 | 56.250 |
| 8 | 800*600@60 | 37.879 | 60.317 |
| 9 | 800*600@72 | 48.077 | 72.188 |
| 10 | 800*600@75 | 46.875 | 75.000 |
| 11 | 1024*768@60 | 48.363 | 60.004 |
| 12 | 1024*768@70 | 56.476 | 70.069 |
| 13 | 1024*768@72 | 58.038 | 71.918 |
| 14 | 1024*768@75 | 60.023 | 75.029 |
| 15 | 1024*768@60 | 48.019 | 60.000 |
| 16 | 1024*768@60 | 47.700 | 60.000 |
| 17 | 1280*1024@60 | 63.980 | 60.000 |
| 18 | 1280*1024@70 | 74.882 | 69.853 |
| 19 | 1280*1024@75 | 79.976 | 75.025 |

Connectors Description

• Connector List

| Reference | Function | Note |
|-----------|---------------------------|----------------|
| J3 | VGA Extension Connector | 2.0mm 14 Pin |
| CON26 | DC 12V Power Connector | 2.0mm 5 Pin |
| CON9 | Key Board Connector | 2.0mm 10 Pin |
| J1 | Inverter Connector | 2.0mm 8 Pin |
| CON3 | Panel Connector LVDS | 2.0mm 2x16 Pin |
| CON2 | Video Extension Connector | 2.0mm 10 Pin |
| CON1 | Audio Extension Connector | 2.0mm 7 Pin |
| CON24 | Speaker Connector | 2.0mm 4 Pin |
| CON12 | IR Connector | 2.0mm 3 Pin |
| CON10 | De-bug | 2.0mm 4 Pin |

• Pin define for connectors

CON9: Key Board (2.0mm 10 Pin DIP)

| Pin | Function | Note |
|-----|----------|------|
| 1 | + | |
| 2 | - | |
| 3 | Auto | |
| 4 | Menu | |
| 5 | Power | |
| 6 | LED-G | |
| 7 | LED-R | |
| 8 | GND | |
| 9 | N.C. | |
| 10 | N.C. | |

J1: Inverter Connector (2.0mm 8 Pin DIP)

| Pin | Function | Note |
|-------|------------|-----------------|
| 1 | 12V | |
| 2,4,6 | GND | |
| 3 | Brightness | 0V Max ; 5V Min |
| 5 | ON/OFF | 5V ON ; 0V OFF |
| 7,8 | 5V | |

CON12: IR Connector (2.0mm 3 Pin DIP)

| Pin | Function | Note |
|-----|----------|------|
| 1 | 5V | |
| 2 | IR-Data | |
| 3 | GND | |

CON24: Audio Speaker Connector (2.0 mm 4Pin DIP)

| Pin | Function | Note |
|-----|----------|------|
| 1 | Lout- | |
| 2 | Lout+ | |
| 3 | Rout- | |
| 4 | Rout+ | |

CON26: DC 12V Power Connector (2.0 mm 4Pin DIP)

| Pin | Function | Note |
|-----|----------|------|
| 1 | 12V | |
| 2 | GND | |
| 3 | GND | |
| 4 | 12V | |
| 5 | N.C. | |

CON1: Audio Extension Connector (2.0 mm 7Pin DIP)

| Pin | Function | Note |
|-----|-------------|------|
| 1 | AV_AFR_IN1 | |
| 2 | AV_AFR_IN2 | |
| 3 | AV_AFL_IN1 | |
| 4 | AV_AFL_IN2 | |
| 5 | PC_LINK_INR | |
| 6 | PC_LINK_INL | |
| 7 | GND | |

JP3: VGA Extension Connector (2.0 mm 14Pin DIP)

| Pin | Function | Note |
|-----|----------|------|
| 1 | RIN+ | |
| 2 | RIN- | |
| 3 | GIN+ | |
| 4 | GIN- | |
| 5 | BIN+ | |
| 6 | BIN- | |
| 7 | RX | |
| 8 | SDA | |
| 9 | GND | |
| 10 | HSIN | |
| 11 | VSIN | |
| 12 | SCL | |
| 13 | TX | |
| 14 | GND | |

CON2: Video Extension Connector (2.0 mm 10Pin DIP)

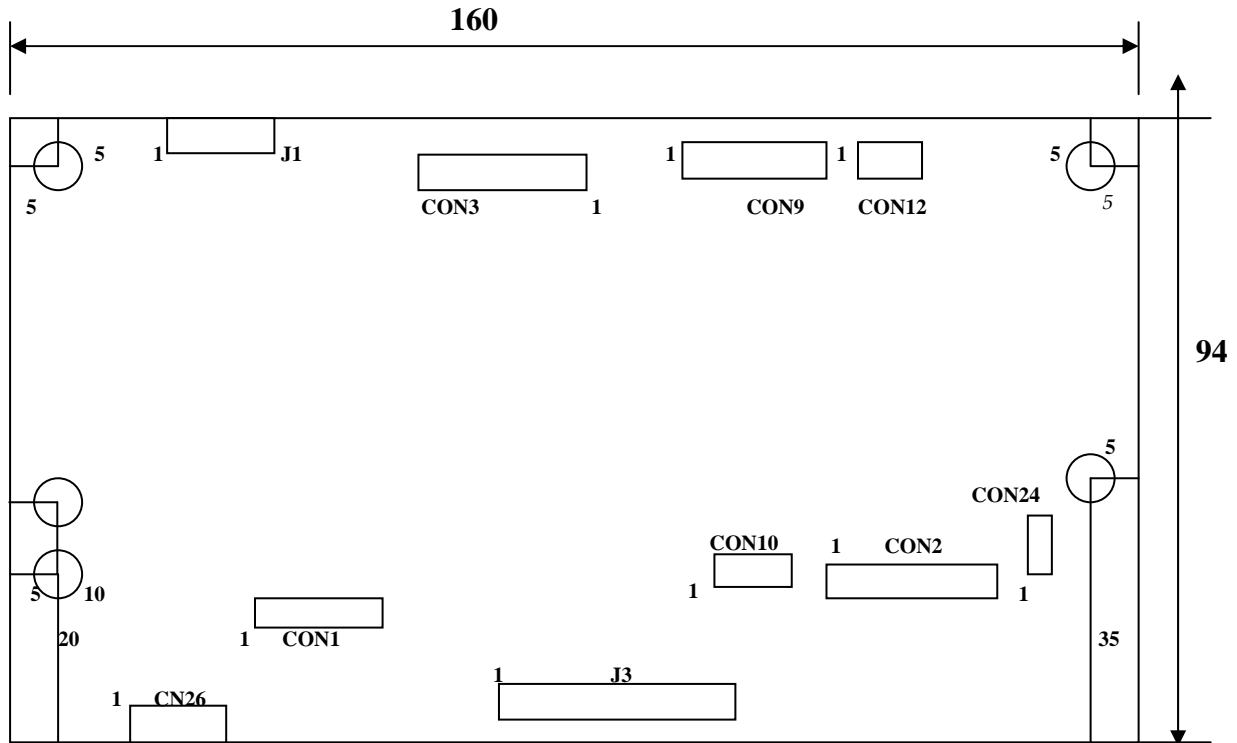
| Pin | Function | Note |
|-----|-------------|------|
| 1 | BNC_IN1 | |
| 2 | BNC_IN1 | |
| 3 | BNC_IN2 | |
| 4 | BNC_IN2 | |
| 5 | BNC_OUT_SW1 | |
| 6 | BNC_OUT_SW2 | |
| 7 | S-VIDEO_C | |
| 8 | S-VIDEO_Y | |
| 9 | GND | |
| 10 | GND | |

CON3:Panel Connector (2.0 mm 32 Pin DIP)

| Pin | Function |
|-----|-----------|
| 1 | VDD |
| 2 | VDD |
| 3 | VDD |
| 4 | VDD |
| 5 | GND |
| 6 | GND |
| 7 | GND |
| 8 | GND |
| 9 | RXEIN3- |
| 10 | RXEIN3+ |
| 11 | RXECLKIN- |
| 12 | RXECLKIN+ |
| 13 | RXEIN2- |
| 14 | RXEIN2+ |
| 15 | RXEIN1- |
| 16 | RXEIN1+ |
| 17 | RXEIN0- |
| 18 | RXEIN0+ |
| 19 | GND |
| 20 | GND |
| 21 | RXOIN3- |
| 22 | RXOIN3+ |
| 23 | RXOCLKIN- |
| 24 | RXOCLKIN+ |
| 25 | RXOIN2- |
| 26 | RXOIN2+ |
| 27 | RXOIN1- |
| 28 | RXOIN1+ |
| 29 | RXOIN0- |
| 30 | RXOIN0+ |
| 31 | GND |
| 32 | GND |

EW-T114 Board specification

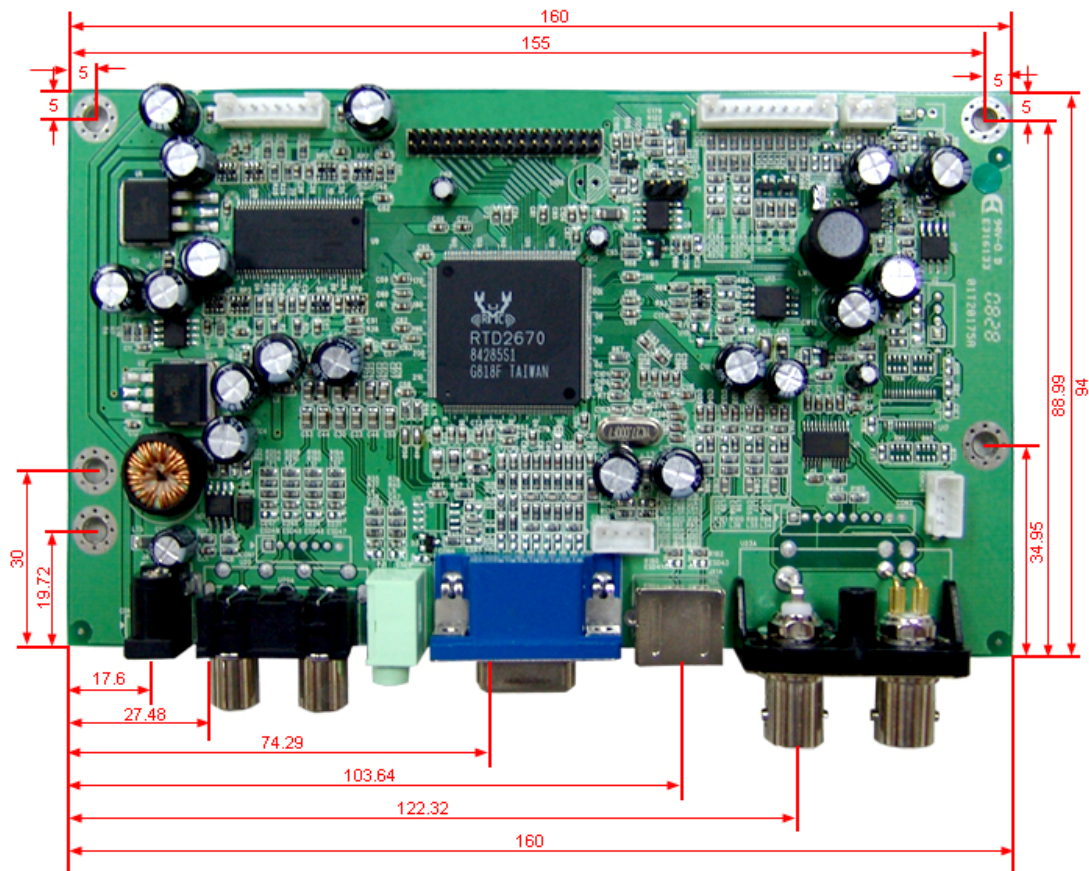
Board Dimension : 160mm * 94mm

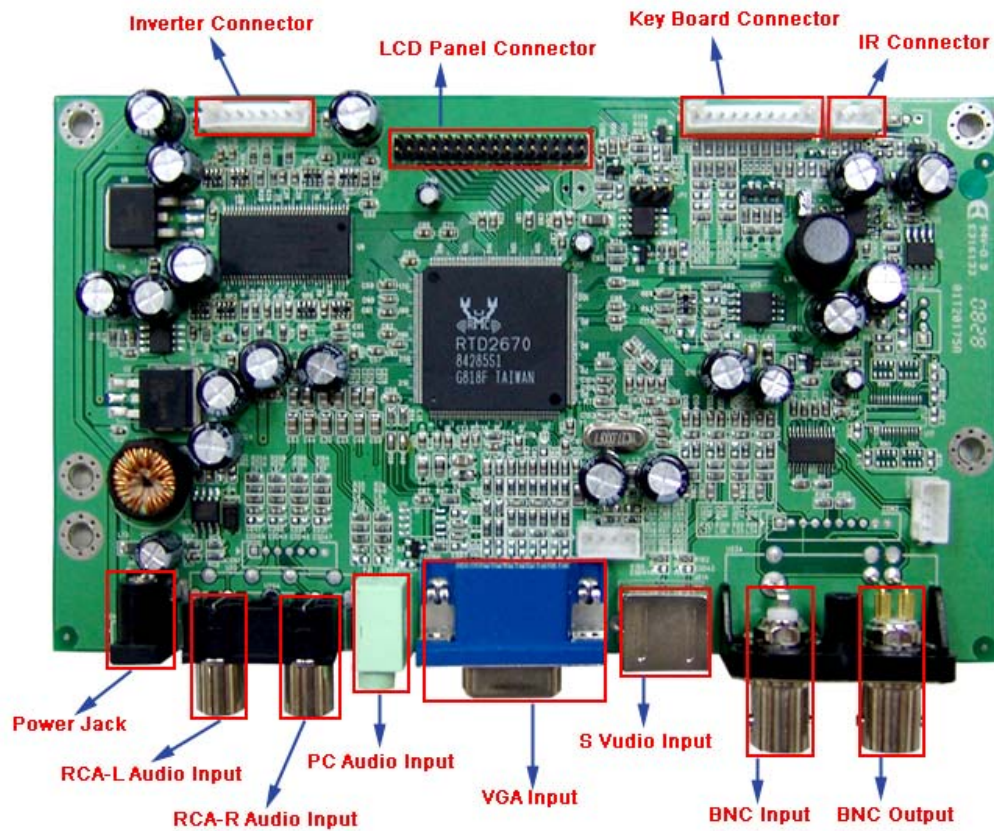


EW-T114

Board specification

單位 : mm±0.3 Board Dimension: 160mm * 94mm





| Picture / Model | Function | Remark |
|--|--|--|
| EW-T114 Resolution up to 1920 * 1080 | <ol style="list-style-type: none"> 1. VGA Input 2. PC Audio Input 3. S-Video Input 4. BNC Video Input 5. BNC Video Output 6. RCA Audio Input | Suitable for LVDS / Interface panel use. |